



TEREX LIFTING AUSTRALIA PTY LTD

Curtin Avenue East • P.O. Box 1396 • Eagle Farm QLD 4009 AUSTRALIA
Telephone: (+61) 7 3868 9600
Internet: www.franna.com.au

Facsimile: (+61) 7 3268 2489
E-Mail: info@franna.com.au

ABN 86 010 671 048
ACN 010 671 048



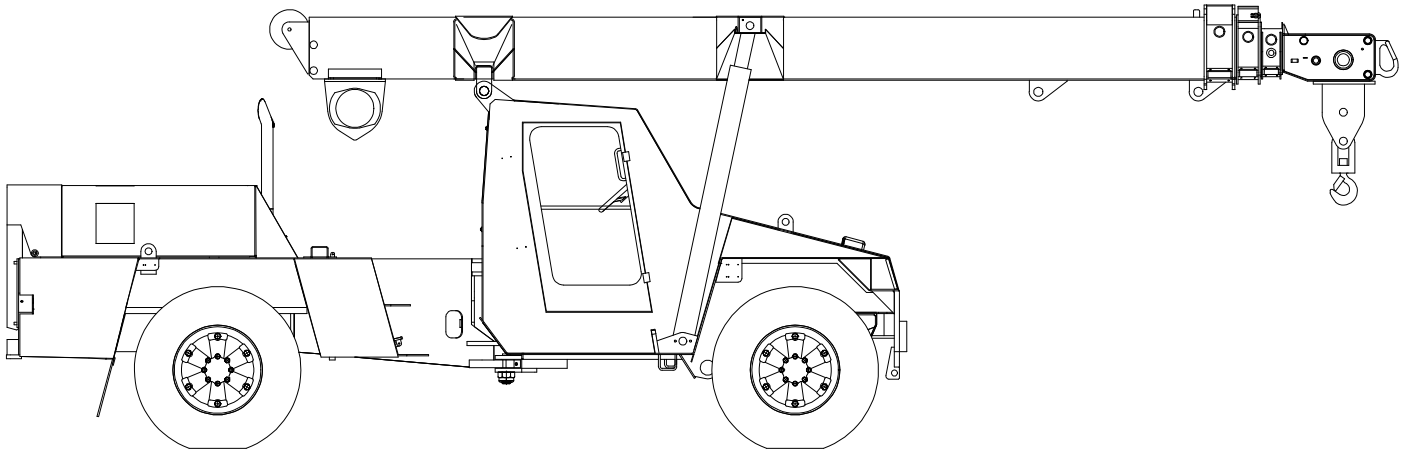
CRANE RATING MANUAL

MODEL AT-15

BOOK PART NUMBER C1325-

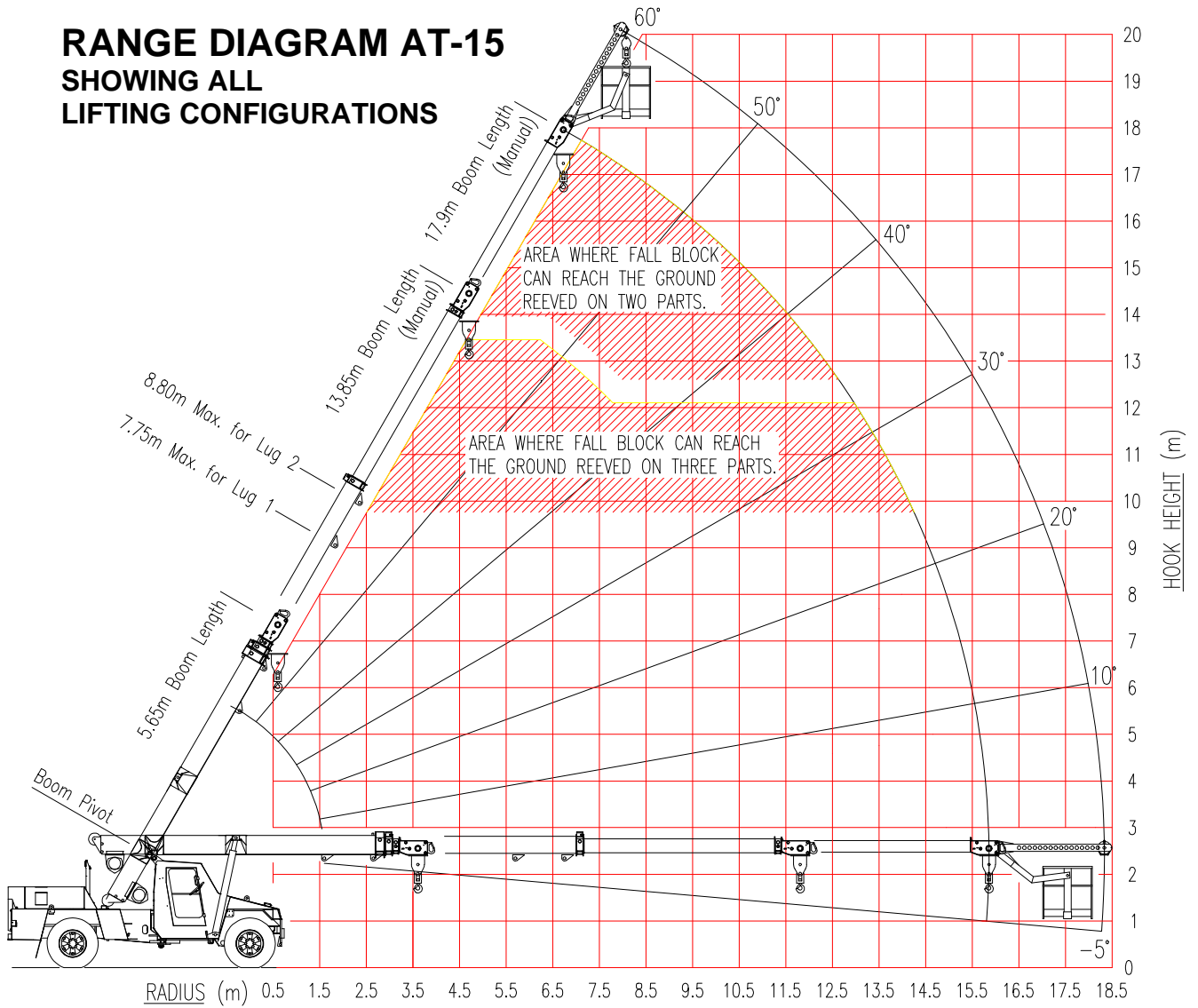
HYDRAULIC ALL TERRAIN PICK & CARRY CRANE

15 TONNE MAXIMUM CAPACITY

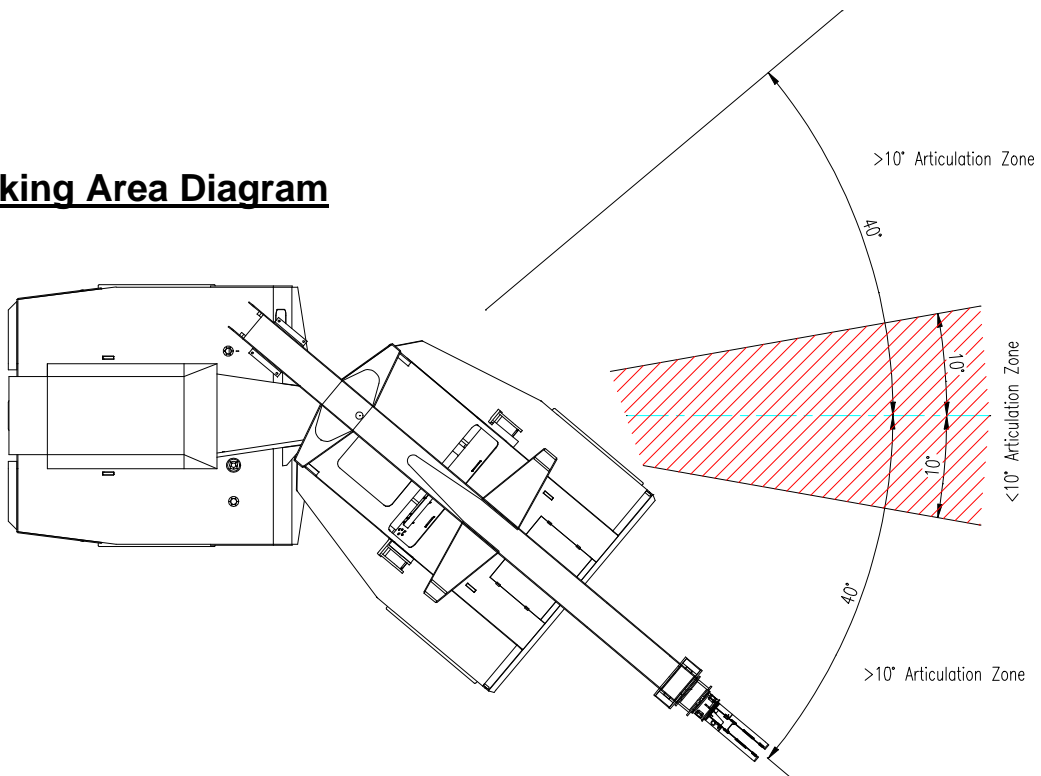


**Do not operate this
crane unless you have
read and understood
the information in this
book.**

RANGE DIAGRAM AT-15 SHOWING ALL LIFTING CONFIGURATIONS



Working Area Diagram



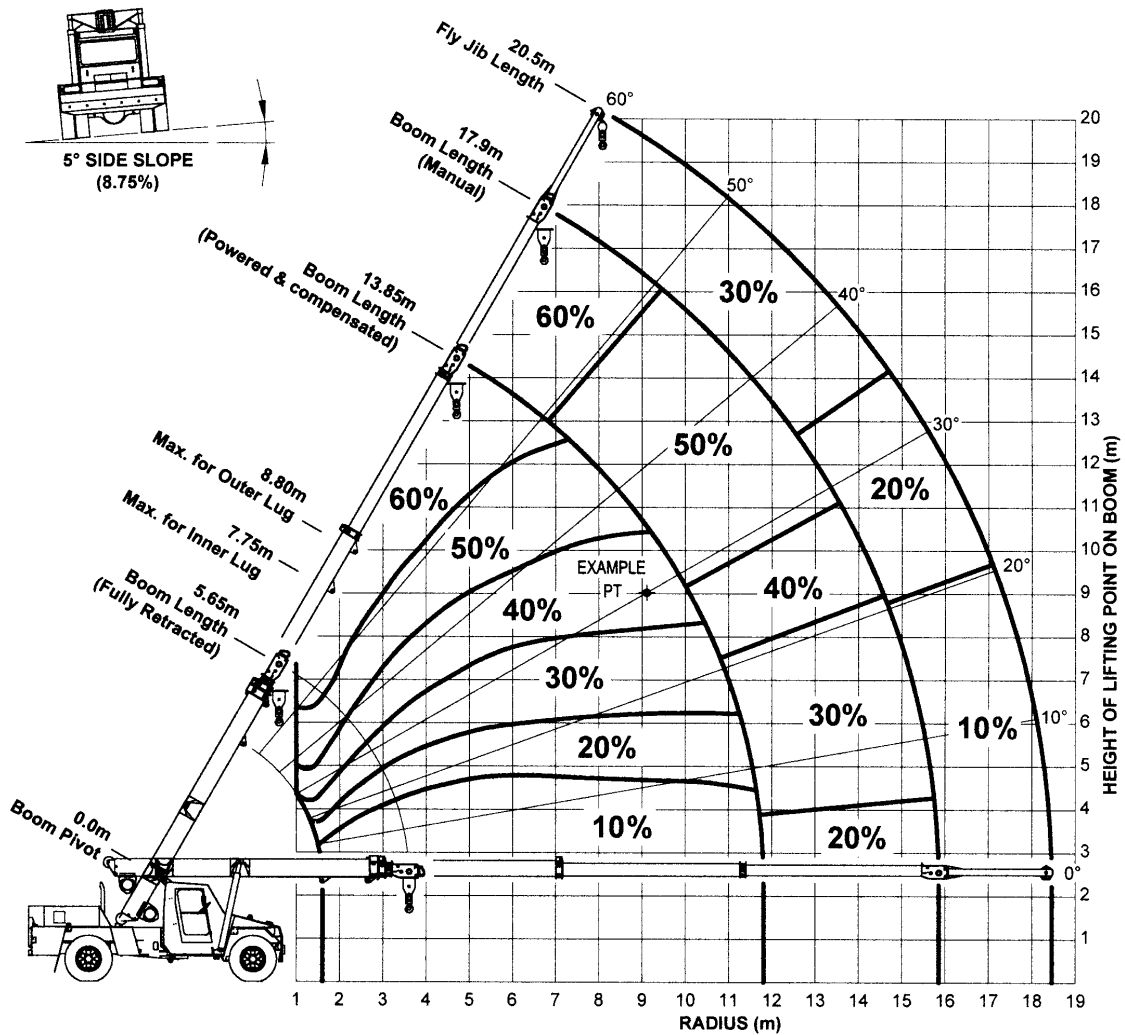


Figure 1: Percentage Deration Chart for AT-15

Note:

1. Percentage deration chart is based on 66.6% stability as per AS 1418.5 with the crane on a firm side slope of 5° (8.75% Gradient).
2. The percentage deration is dependent upon the location of the lifting point on the boom.
3. The percentage deration should be applied to the SWL as read off the crane's load chart for the applicable boom length, boom angle, radius and articulation angle.

Example (For AT-15 Crane, Load Chart C1325-):

Lifting condition:

Boom Length: 13.0 m
 Boom Angle: 32°
 Radius: 9.0 m
 Articulation Angle: Greater than 10°

SWL (Level ground): 2050 kg (From Load Chart LMI Duty 01, for above lifting conditions)

Percentage Deration: 40 % (From Figure 1: Percentage Deration Chart)

$$\begin{aligned}
 \text{SWL (5° Slide Slope)} &= \text{SWL (as per load chart)} - \text{Percentage Deration} \times \text{SWL (as per load chart)} / 100 \% \\
 &= 2050 \text{ kg} - 40\% \times 2050 \text{ kg} / 100\% \\
 &= 1230 \text{ kg}
 \end{aligned}$$

HOOK BLOCK WEIGHTS

SINGLE PART HOOK BLOCK	30 kg
TWO/THREE PART HOOK BLOCK	70 kg
15 METRIC TONNE HOOK	15 kg

**NOTE : THESE WEIGHTS APPLY ONLY TO TEREX LIFTING AUSTRALIA
PTY LTD SUPPLIED EQUIPMENT.**

WINCH LOAD CHART

Number of Parts of Rope	Permissible Winch Load (kg)
1	3 500
2	7 000
3	10 500

Wire Rope : Æ13mm 35W x 7 Non-rotating Compak
 Minimum Breaking Force 138 kN
 Length - 60m

TYRE SPECIFICATIONS

Condition	Speed	Load Rating
Pick & Carry	<1.6 km/h	7100 kg per tyre (dual fitment)
Highway	90 km/h	2625 kg per tyre (dual fitment)

TYRE INFLATION CHART

Position	Construction	Inflation Pressure – PSI	
		Pick & Carry	Highway Travel
Front	11.00 x 20	115	115
Rear	11.00 x 20	90	90

C1325-/3-3

RADIUS	BOOM LENGTH (m)																	
	5.66	6.00	6.50	7.00	7.50	8.00	8.50	9.00	9.50	10.00	10.50	11.00	11.50	12.00	12.50	13.00	13.50	13.86
1.6	10500	10500	10500	10500	10500													
	10500	10500	10500	10500	10500													
	48	50	54	57	59													
2.0	10500	10500	10500	10500	10500	10500	10500											
	10500	10500	10500	10500	10500	10500	10500											
	42	46	50	53	56	58	60											
2.5	10400	10350	10350	10350	10350	10350	10350	9950	9650									
	9250	9250	9250	9250	9250	9250	9250	9200	9200									
	34	39	44	48	51	54	56	58	60									
3.0	8500	8500	8500	8500	8500	8500	8500	8500	8500	8300	7350							
	7600	7600	7600	7600	7600	7550	7550	7550	7550	7550	7350							
	25	31	37	42	46	49	52	55	57	58	60							
3.5	7200	7200	7200	7200	7200	7200	7150	7150	7150	7150	6750	5950	5650					
	6400	6400	6400	6400	6400	6400	6400	6400	6350	6350	6350	5950	5650					
	9	20	30	36	41	45	48	51	53	55	57	59	60					
4.0	6950	6250	6200	6200	6200	6200	6200	6200	6200	6150	6150	5500	5250	5000	4800			
	6150	5550	5500	5500	5500	5500	5500	5500	5500	5500	5500	5450	5250	5000	4800			
	(3.61)	(3.95)	20	28	35	39	43	46	49	52	54	56	57	59	60			
4.5			5450	5400	5400	5400	5400	5400	5400	5400	5400	5150	4900	4650	4500	4300	4150	
			4850	4800	4800	4800	4800	4800	4800	4800	4800	4800	4800	4650	4500	4300	4150	
			(4.45)	19	28	34	38	42	45	48	50	52	54	56	57	59	60	
5.0				4850	4800	4800	4800	4800	4800	4800	4800	4800	4550	4350	4200	4050	3900	3800
				4300	4250	4250	4250	4250	4250	4250	4250	4250	4250	4200	4200	4050	3900	3800
				(4.95)	18	27	33	37	41	44	47	49	51	53	55	56	58	59
6.0					4300	3900	3850	3850	3850	3850	3850	3850	3850	3850	3700	3550	3300	3200
					3800	3450	3400	3400	3400	3400	3400	3400	3400	3400	3400	3400	3300	3200
					(5.45)	(5.95)	17	25	31	35	39	42	45	47	49	51	52	54
7.0						3550	3200	3200	3200	3200	3200	3200	3200	3200	3200	3050	2950	2850
						3100	2800	2800	2800	2800	2800	2800	2800	2800	2800	2800	2800	2800
						(6.45)	(6.95)	16	24	29	34	37	40	43	45	47	48	
8.0								2950	2700	2700	2700	2700	2700	2700	2700	2700	2650	2600
								2600	2350	2350	2350	2350	2350	2350	2350	2350	2350	2350
								(7.45)	(7.95)	16	23	28	32	36	38	41	43	
9.0									2500	2300	2300	2300	2300	2300	2300	2300	2300	2300
									2200	2000	2000	2000	2000	2000	2000	2000	2000	2000
									(8.45)	(8.95)	15	22	27	31	34	36	36	
10.0												2150	2000	2000	2000	2000	2000	2000
												1850	1750	1750	1750	1750	1750	1750
												(9.45)	(9.95)	14	21	26	29	
11.0														1900	1750	1750	1750	
														1600	1500	1500	1500	
														(10.45)	(10.95)	14	19	
11.81																	1650	1550
																	1400	1350
																	(11.45)	(11.81)




SWL (KG) LESS THAN 10 DEG ARTICULATION
 SWL (KG) GREATER THAN 10 DEG ARTICULATION
 BOOM ANGLE OR (RADIUS AT 0 DEG BOOM ANGLE)

Weight of slings & hook block to be added to load
 Read and understand warning notes before operating crane
 Loads above bold red line are structural

LMI Duty
 Lifting on WINCH
01

C1325-/3-5

RADIUS	BOOM LENGTH (m)																	
	5.95	6.50	7.00	7.50	8.00	8.50	9.00	9.50	10.00	10.50	11.00	11.50	12.00	12.50	13.00	13.50	14.00	14.15
1.6	8000	8000	8000	8000														
	8000	8000	8000	8000														
2.0	50	54	57	59														
	8000	8000	8000	8000	8000	8000												
2.5	8000	8000	8000	8000	8000	8000	8000	8000										
	8000	8000	8000	8000	8000	8000	8000	8000										
3.0	38	44	48	51	54	56	58	60										
	7750	8000	8000	8000	8000	8000	8000	8000	8000	7950								
3.5	7650	7650	7650	7650	7600	7600	7600	7600	7600	7600								
	30	37	42	46	49	52	55	57	59	60								
4.0	7250	7250	7250	7250	7200	7200	7200	7200	7200	7200	6300	5700						
	6450	6450	6450	6450	6450	6450	6400	6400	6400	6400	6300	5700						
4.5	19	30	36	41	45	48	51	53	55	57	59	60						
	6400	6250	6250	6250	6250	6250	6200	6200	6200	6200	5850	5300	5050	4850				
5.0	5700	5550	5550	5550	5550	5550	5500	5500	5500	5500	5500	5300	5050	4850				
	(3.90)	20	29	35	39	43	46	49	52	54	56	57	59	60				
5.5		5500	5450	5450	5450	5450	5450	5450	5450	5450	5450	4950	4700	4550	4350	4200		
		4900	4850	4850	4850	4850	4850	4850	4800	4800	4800	4800	4700	4550	4350	4200		
6.0		(4.45)	19	28	34	38	42	45	48	50	52	54	56	57	59	60		
			4900	4850	4850	4850	4850	4850	4850	4800	4800	4800	4600	4400	4250	4100	3950	3800
6.5			4300	4300	4300	4300	4300	4250	4250	4250	4250	4250	4250	4100	3950	3800	3750	
			(4.95)	19	27	33	37	41	44	47	49	51	53	55	56	58	59	59
7.0				4350	3950	3900	3900	3900	3900	3900	3900	3900	3900	3750	3600	3500	3200	3200
				3850	3450	3450	3450	3450	3450	3450	3450	3450	3400	3400	3400	3400	3200	3200
7.5				(5.45)	(5.95)	17	25	31	35	39	42	45	47	49	51	53	54	55
						3550	3250	3250	3250	3250	3250	3250	3200	3200	3100	3000	2900	2850
8.0						3150	2850	2850	2850	2850	2850	2850	2850	2800	2800	2800	2800	2800
						(6.45)	(6.95)	17	24	29	34	37	40	43	45	47	49	49
8.5								3000	2750	2750	2750	2750	2750	2700	2700	2700	2600	2550
								2600	2400	2400	2400	2400	2400	2400	2400	2350	2350	2350
9.0								(7.45)	(7.95)	16	23	28	32	36	38	41	43	44
										2550	2350	2350	2350	2350	2350	2350	2350	2350
9.5										2200	2050	2050	2050	2050	2050	2050	2050	2050
										(8.45)	(8.95)	15	22	27	31	34	37	38
10.0												2200	2050	2050	2050	2050	2000	2000
												1900	1750	1750	1750	1750	1750	1750
10.5												(9.45)	(9.95)	15	21	26	30	31
														1900	1800	1750	1750	1750
11.0														1650	1500	1500	1500	1500
														(10.45)	(10.95)	14	20	22
11.5																1650	1550	1550
																1400	1350	1300
12.0																(11.45)	(11.95)	(12.00)



 SWL (KG) LESS THAN 10 DEG ARTICULATION
 SWL (KG) GREATER THAN 10 DEG ARTICULATION
 BOOM ANGLE OR (RADIUS AT 0 DEG BOOM ANGLE)

NOTE: When using the rhino hook, ensure the winch rope is fully tensioned.

Weight of slings & hook block to be added to load
 Read and understand warning notes before operating crane
 Loads above bold red line are structural